

Durability. Security. **Control.**

Sharps container cabinets designed to minimize risk and maximize security



TOUCHLESS DROP METHOD

Compared to standard mechanical door levers instructing users to “lift to assure disposal,” our touchless vertical drop method utilizes a drop tube that mitigates the possibility of touch contamination and cross contamination risks tied to high touch surfaces

DURABLE

Steel material (16 or 18 gauge) is durable, easy to clean, long lasting, and secure compared to any standard plastic enclosure

EASY TO MOUNT

Rugged back plate cut-outs are easy to mount to any wall surface yet secure to discourage forced removal

ANTI-BACTERIAL

Material options include 304 stainless steel, known as the industry standard for mitigating bacteria formation on high touch devices





CABINET COLORS & MATERIALS

Choose from a number of decorative colors to compliment a variety of interior environments or choose attractive polished stainless steel for indoor or outdoor placement

MATERIAL OPTIONS



*Stainless Steel
Carbonless*



*Stainless Steel
Polished*

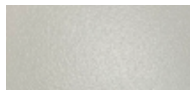


Powder Coated

COLOR OPTIONS



Stardust Silver



Almond Tex



Sky White



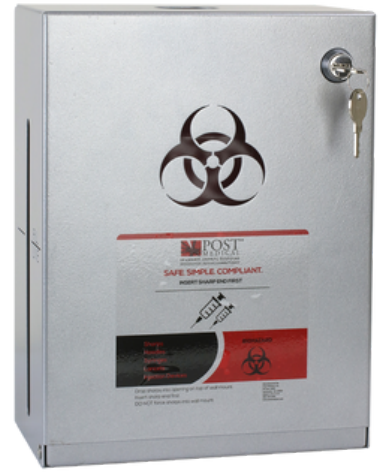
CABINET LOCK SPECIFICATION

Post Medical utilizes solid steel material (not a metal veneer) secured behind a flat key with a unique profile crafted to protect against unauthorized access.



FLAT KEY

Post Medical's flat key locks offer the most economical yet robust access control system on the market.



1.5 GAL SHARPS CONTAINER CABINET

Description	SKU
Powder Coated, View Window	88-SFP
Powder Coated, No View Window	88-SFP-B
Powder Coated, Narrow View Window	88-SFP-C
Stainless Steel, View Cutout	88-SFP-SST
Stainless Steel All-Weather, View Cutout	88-SFP-SST-AW

1 GAL SHARPS CONTAINER CABINET

Description	SKU
Powder Coated Steel Glacier White	650-DF-IT-W
Powder Coated Steel Grey Steel	650-DF-IT-SS
Stainless Steel	650-DF-IT-SST



1 QT SHARPS CONTAINER CABINET

Description	SKU
Powder Coated	110-S
Stainless Steel	110-SST
Stainless Steel All Weather	110-SST-AW

1.5 GAL SHARPS CONTAINER CABINET

Description	SKU
Powder Coated Steel Glacier White	700-DF-IT-W
Powder Coated Steel Grey Steel	700-DF-IT-SS
Stainless Steel	700-DF-IT-SST



1.5 QT SHARPS CONTAINER CABINET

Description	SKU
Powder Coated	150-SC
Stainless Steel	150-SST
Stainless Steel All Weather	150-SST-AW

2.5 GAL SHARPS CONTAINER CABINET

Description	SKU
Powder Coated Steel Glacier White	750-DF-IT-W
Powder Coated Steel Grey Steel	750-DF-IT-SS
Stainless Steel	750-DF-IT-SST